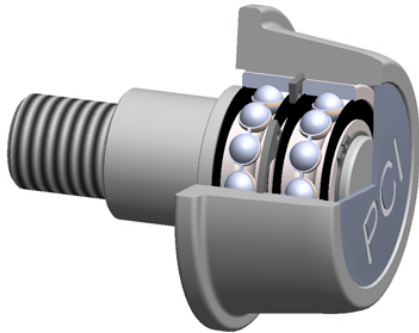




Sealmaster BEARING LTD



PCI Procal Inc. CIRE-4.00E Flanged Cam Followers

Bearing No. CIRE-4.00E

roller diameter:	3.5625 in
roller shape:	Channel & I-Beam
roller width:	1.6875 in
closure type:	Double Seal
stud diameter:	0.3750 in
point diameter:	3.9400 in
thread size:	1-14
radial dynamic load capacity:	5560 lbs
stud length:	2.2500 in
radial static load capacity:	3500 lbs
roller material:	Chrome Steel
technical specifications:	Click here
bearing element:	Balls - Two Rows

CIRE-4.00E Bearing 2D drawings and 3D CAD models