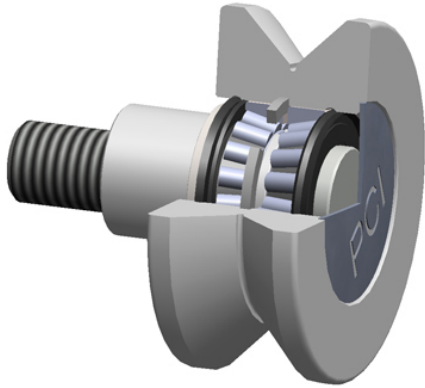




## Sealmaster BEARING LTD



### PCI Procal Inc. VTRE-4.50 V-Groove Cam Followers

Bearing No. VTRE-4.50

roller diameter:	4.5000 in
roller material:	Chrome Steel
roller width:	2.0000 in
bearing element:	Tapered Rollers
point diameter:	3.0000 in
closure type:	Double Seal
stud diameter:	1.2500 in
radial dynamic load capacity:	14300 lb
thread size:	1-1/4-12
radial static load capacity:	20000 lb
stud length:	2.5000 in
technical specifications:	<a href="#">Click here</a>
roller shape:	V-Grooved

VTRE-4.50 Bearing 2D drawings and 3D CAD models