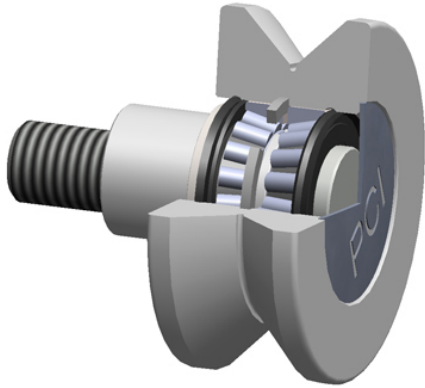




Sealmaster BEARING LTD



PCI Procal Inc. VTRE-3.50E V-Groove Cam Followers

Bearing No. VTRE-3.50E

roller diameter:	3.5000 in
roller material:	Chrome Steel
roller width:	1.6500 in
bearing element:	Tapered Rollers
point diameter:	2.2500 in
closure type:	Double Seal
stud diameter:	0.7500 in
radial dynamic load capacity:	11957 lb
thread size:	3/4-16
radial static load capacity:	7200 lb
stud length:	2.0000 in
technical specifications:	Click here
roller shape:	V-Grooved

VTRE-3.50E Bearing 2D drawings and 3D CAD models